

# ARNO

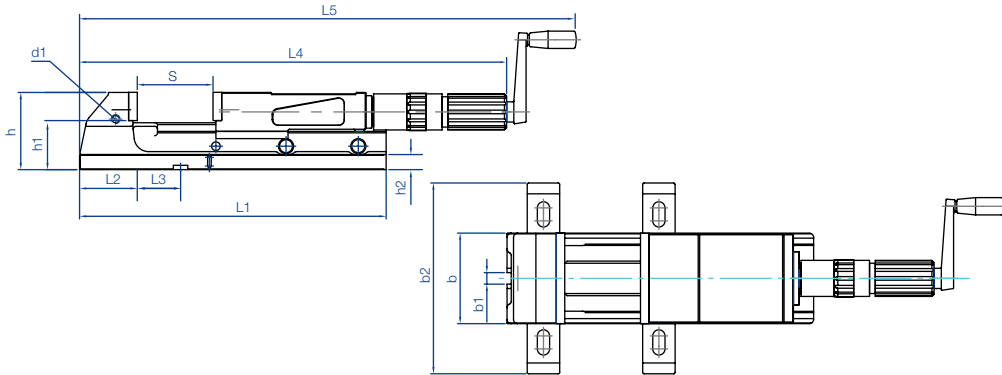
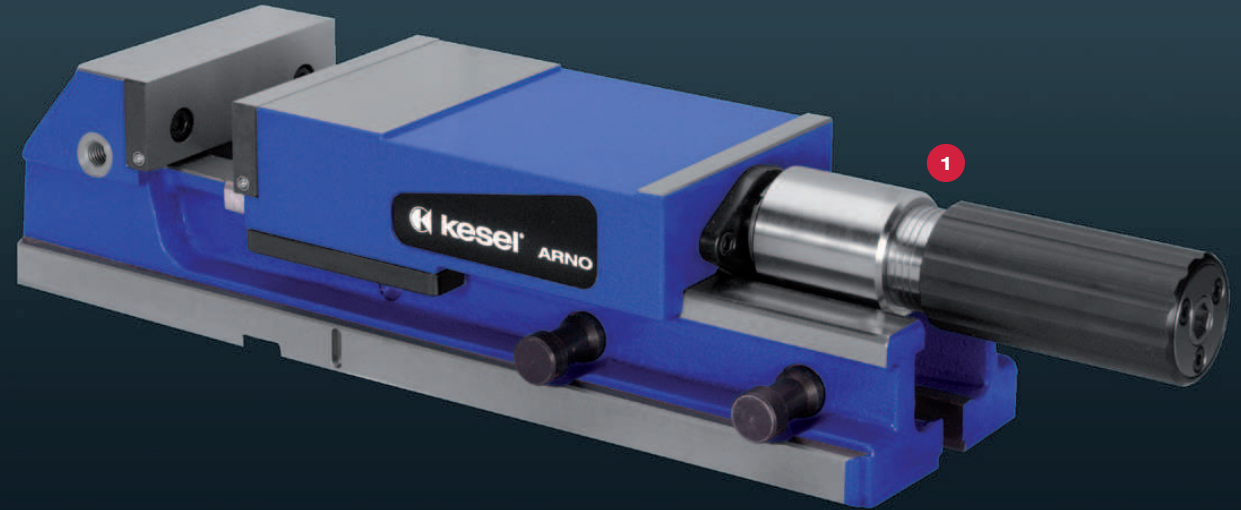
## High pressure machine vise

Can be operated with manual crank. Universal high pressure vise with narrow design for conventional machines. A system that has been tried and tested for decades.

- > Strong body of spheroidal graphite iron GJS-600
- > Functional surfaces hardened and ground
- > Optimum accuracy on the workpiece due to ground "camber" on the fixed jaw

### Scope of delivery:

4 clamping claws, 1 manual crank

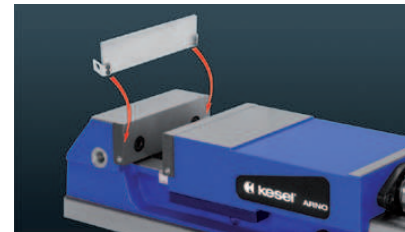


Size b	Order number		Clamping force (kN)	Clamping range „S“ adjustable via locking pins			Weight
	mechanical	hydraulic		Step 1	Step 2	expanded clamping range*	
125	04.10.125.000.9	04.11.125.000.9	40	0 - 105	100 - 205	(255)	25,0
160	04.10.160.000.9	04.11.160.000.9	50	0 - 155	150 - 305	(365)	50,0

Size b	L1	L2	L3	L4		L5		b1	b2	h	h1	h2	d1
				min.	max.	min.	max.						
125	425	80	60	489	694	613	818	16	265	107	65	21	M12
160	570	90	95	575	880	712	1007	16	300	130	80	25	M16

\*Clamping range expansion by fitting a bolt in the transverse groove of the spindle nut.



### Step ledge quick release system

- > Step ledges are simply "clicked" in by hand, with no need for tools
- > No penetration of chips beneath the step ledge
- > Secure and stable hold, also with the use of compressed air
- > Available in a range of heights (accessories)



### 1 ARNO mechanical-hydraulic

- > Hydraulic force intensifier
- > Smooth motion
- > Clamping force indication via optical grooved marking
- > Adjustable slip clutch

### 2 ARNO mechanical-mechanical

- > Mechanical force intensifier
- > Precise force setting through limit stop
- > Pre-clamping option
- > Adjustable slip clutch

**ARNO accessories**



**Turntable** 360° graduation for exact and quick vise alignment. With longitudinal grooves for positioning and screwing on.

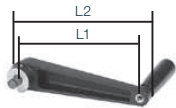
Size	Order no.	Dimensions	Weight
125	04.13.125.000.9	270x264x28 mm	11 kg
160	04.13.160.000.9	325x325x32 mm	19 kg

**High pressure spindle**



mechanical / mechanical					
Size	Order no.	max. clamping force in kN	ø d2	Length	Weight
125	04.15.152.000.2	40	Tr 30x6 <sup>299</sup>	360 mm	3,4 kg
160	04.15.252.000.2	50	Tr 30x6 <sup>299</sup>	425 mm	3,8 kg
200	04.15.352.000.2	80	Tr 36x6 <sup>299</sup>	550 mm	6,5 kg

mechanical / hydraulic					
Size	Order no.	max. clamping force in kN	ø d2	Length	Weight
125	04.15.102.000.2	40	Tr 30x6 <sup>299</sup>	360 mm	3,4 kg
160	04.15.202.000.2	50	Tr 30x6 <sup>299</sup>	425 mm	3,8 kg
200	04.15.302.000.2	80	Tr 36x6 <sup>299</sup>	550 mm	6,5 kg



**Manual crank standard version** with snap ring to prevent it falling out due to machine vibrations

Size	Order no.	Length 1	Length 2	Width
125	03.15.103.000.4	125	155	120
160-200	03.15.203.002.4	160	190	127

**Manual crank in shortened design** for use in place of the standard manual crank, if the throughput height to the machine table is too small



Size	Order no.	Length	Width
125-160	03.15.103.001.4	110	90

**ARNO accessories**



**Smooth clamping jaw hardened**, ground, standard equipment

**Smooth clamping jaw soft (1.2842)**, milled, for the fabrication of moulding jaws

**Clamping jaw with linear grooves** for firmly gripping the workpieces

Size	Order no. Smooth clamping jaw hardened	Height	Thickness
125	01.10.101.005.5	39,2	12
160	01.10.201.004.4	49,2	16
200	01.10.301.005.4	62,2	20

Smooth clamping jaw soft			
Size	Order no.	Height	Thickness
125	01.11.105.002.5	39,2	12
160	01.11.205.002.4	49,2	16
200	01.11.305.002.4	62,2	20

Clamping jaw with linear grooves			
Size	Order no.	Height	Thickness
125	01.11.105.001.5	39,2	12
160	01.11.205.001.5	49,2	16



**Smooth clamping jaw** with step, hardened and ground, for saving clamping supports

Size	Order no.	Step	Thickness	Height
125	01.11.105.003.5	3 x 6	12	39,2
125	01.11.105.008.5	5 x 10	12	39,2
160	01.11.205.003.4	5 x 8	16	49,2
200	01.11.305.003.4	6 x 12	20	62,2



**Clamping jaw with corrugation** hardened and ground

Size	Order no.	Height	Thickness	Gripper Order no.	Thread
125	01.26.160.035.3	40	12	01.26.160.048.4	M10
160	01.26.260.030.3	50	16	01.26.260.080	M12



**Grip clamping jaw**, hardened, with step

Size	Order no.	Height	Thickness	Step
125	01.25.150.0002	40	12	3x3
160	01.25.260.0004	50	16	3x5



**Prism jaws with horizontal prism 120°** hardened and ground

Size l	Order no.	Height	Thickness	Clamping diameter	
				with 1 jaw	with 2 jaw
125	01.11.105.005.4	39,2	20	ø 9-50	ø 14-50

**ARNO accessories**



**Prism jaws with horizontal and vertical prism 90°** hardened and ground

Size I	Order no.	Height	Thick-ness	Clamping diameter	
				1 jaw	2 jaw
125	01.11.105.004.4	39,2	28	ø 15-42	ø 24-42
160	01.11.205.004.3	49,2	32	ø 18-50	ø 28-50



**Pendulum jaws** with smooth slide, hardened and ground, for clamping conical workpieces

Size	Order no.	Height	Thickness
125	04.13.125.150.9	39,2	43
160	04.13.160.150.9	49,2	52



**Pull-down jaws** smooth, the workpiece is hold securely, with a deep drawing effect

Size	Order no.	Height	Thickness
125	04.13.125.200.9	39,2	25
160	04.13.160.200.9	49,2	28



**Pull-down jaws for raw parts** with inset spring plate for clamping raw parts. The spring plate establish a secure hold and deep drawing effect

Size	Order no.	Height	Thickness
125	04.13.125.250.9	40	21
160	04.13.160.250.9	50	24

**ARNO accessories**



**Smooth clamping jaws raised**, hardened and ground, for clamping tall workpieces

Size	Order no.	Height	Thickness
125	04.13.125.300.9	76	22



**Universal top jaws with angle adjustment possibility** hardened and ground

Size	Order no.	Height	Thickness
125	04.13.125.400.9	42	10
160	04.13.160.400.9	52	10



**Workpiece stop** adjustable

For size	Order no.	Thread
125	03.11.008.001.4	M 12
160/200	03.11.208.001.4	M 16



**Step ledges**

Size	Order no.	Height	Thickness
125	03.25.160.022.9	13	3
125	03.25.160.023.9	22	3
125	03.25.160.024.9	35	3
125	03.26.160.002.9	39	3
125	04.25.150.060	35	3
125	04.25.150.061	15	3
160	03.25.260.022.9	14	3
160	03.25.260.023.9	30	3
160	03.25.260.024.9	44	3
160	03.26.260.0001	49	3